

# TMX U387

SAW Passband Filter - Remote Control - RF  
*Specification (Rev-1)*

---

■ Technical overview .....	P01
■ Matching Network for 50Ω / 50Ω Configuration .....	P01
■ Typical Response (Measurement) .....	P02
■ Package Drawing .....	P02

# TMX U387

## SAW Passband Filter – Remote Control - RF Specification (Rev-1)

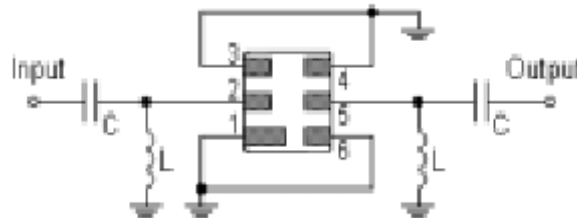
February 08<sup>th</sup>, 2005

Electrical Parameters	Unit	Minimum	Typical <sup>(1)</sup>	Maximum
Source Impedance (single ended)	$\Omega$	-	50 <sup>(2)</sup>	-
Load Impedance (single ended)	$\Omega$	-	50 <sup>(2)</sup>	-
Center Frequency $f_0$	MHz	-	433.42	-
<b>Rejection</b>				
At $f_c - 21.4$ MHz (Image)	dB	36	45	-
At $f_c - 10.7$ MHz (LO)	dB	20	25	-
Ultimate	dB	-	60	-
Insertion Loss	dB	-	3.5	5.0
Pass band at 3 dB	MHz	0.6	0.9	-
<b>Temperature</b>				
Turnover Temperature	$^{\circ}\text{C}$	25	-	55
Turnover Frequency	MHz	-	$f_0$	-
Frequency Temperature Coefficient	ppm/ $^{\circ}\text{C}^2$	-	0.032	-
Frequency Aging Absolute Value during the First Year	ppm/yr	-	10	-
<b>Package type &amp; size</b>				
Length x Width	mm <sup>2</sup>	-	3.8 x 3.8	-
Height	mm	-	1.35	1.5
<b>Pin Out</b>				
Input	2	Output	5	
To Be Grounded	1, 3, 4, 6			

**Notes :**

- (1) Typical values are nominal performances at room temperature
- (2) External matching circuit is required (see drawing hereunder)

### 50 $\Omega$ / 50 $\Omega$ CONFIGURATION



C = 13 pF and L = 3.0 nH. These components values have to be adjusted to the customer PC Board, due to parasitics inductors and capacitors.

### Maximum Ratings

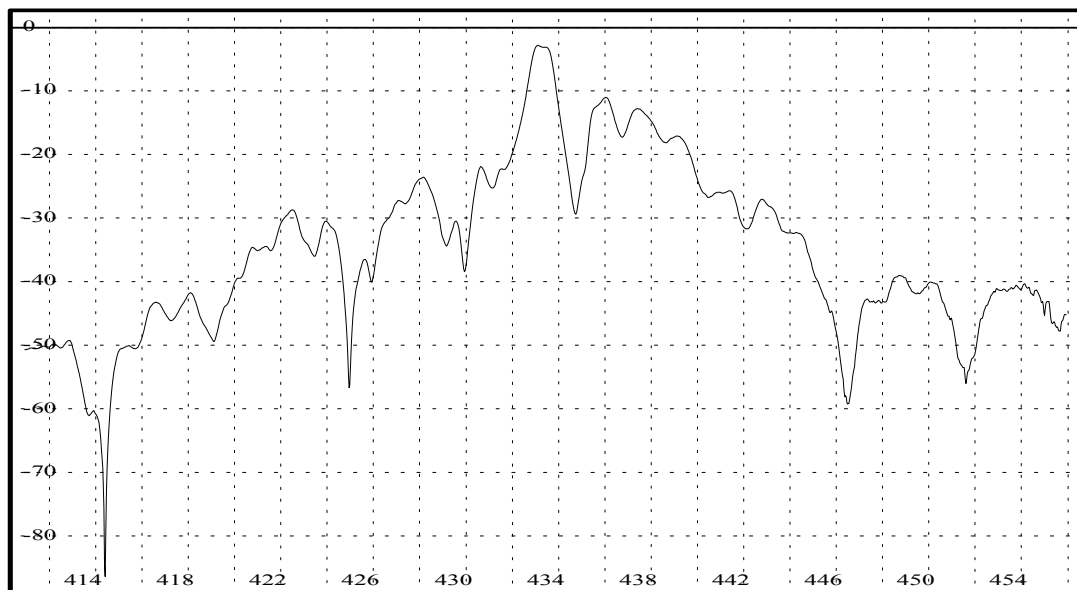
Rating		Unit	Value
Operating Temperature Range	$T_A$	-10 to +60	$^{\circ}\text{C}$
Storage Temperature Range	$T_{stg}$	-45 to +85	$^{\circ}\text{C}$
DC Voltage	$V_{DC}$	12	V
Input Power		18	dBm

# TMX U387

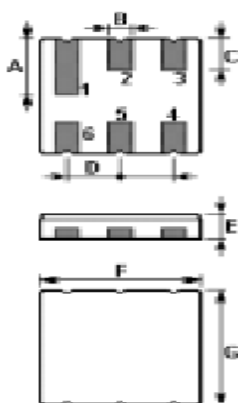
SAW Passband Filter – Remote Control - RF  
Specification (Rev-1)

February 08<sup>th</sup>, 2005

## TYPICAL S21 RESPONSE



## PACKAGE DRAWING



Pin	Configuration
2	Input
5	Output
1,3,4,6	Ground

Sign	Data (unit: mm)	Sign	Data (unit: mm)
A	1.9	E	1.2
B	0.64	F	3.8
C	1.0	G	3.8
D	1.27		